

# HCD2 SERIES

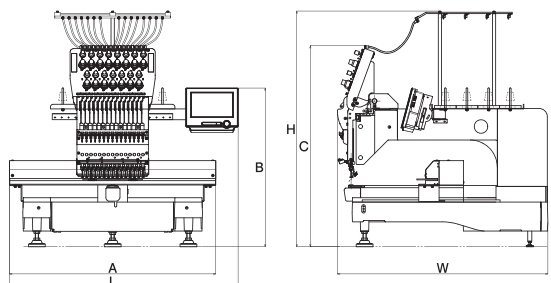


## ● SPECIFICATIONS

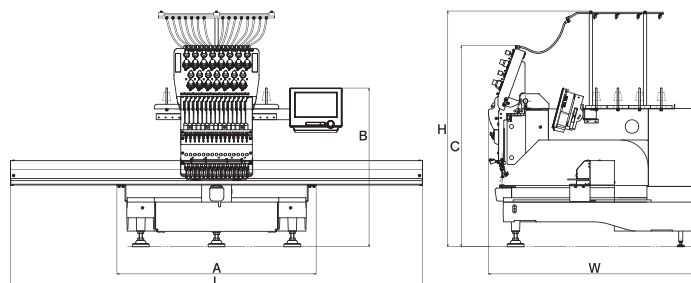
MODEL	Head	Needles	Embroidery Area (DxW)			Maximum Speed (r.p.m.)	Stitch Length	Memory
			Maximum	Wide Cap Frame	Low-profile Cap frame			
HCD2-1501-40	1	15	400×520mm 15.7×20.5inch	80×360mm 3.2×14.2inch	70×180mm 2.8×7.1inch	1,200	0.1-12.7mm	40,000,000 stitches 250 patterns
HCD2-X1501-40			400×1,200mm 15.7×47.2inch			1,000		

MODEL	Power Supply	Power Consumption	Frequency	Weight	Dimensions						
					L	W	H	A	B	C	
HCD2-1501-40	Single Phase 100-115V 200-230V	240W	50/60Hz	106kg 233lbs	845	778	871	762	586	743	(mm)
				33.3	30.6	34.3	30.0	23.1	29.3	(inch)	
HCD2-X1501-40				109kg 240lbs	1,522	778	871	736	586	743	(mm)
					59.9	30.6	34.3	29.0	23.1	29.3	(inch)

### ● HCD2



### ● HCD2-X



#### NOTE

● Embroidery area may be limited by hoops to be used. ● Specifications are subject to change without notice. ● Maximum speed may change by sewing conditions.

Manufactured by :

HAPPY Industrial Corporation

TOKYO OFFICE: 2-9-5 TAITO, TAITO-KU, TOKYO, 110-0016 JAPAN

phone: +81-3-3834-0711 fax: +81-3-3835-8917

E-mail: emb-info@happy-ind.co.jp

www.happy-ind.co.jp

Distributed by :

# HCD2 SERIES

## Computerized Embroidery Machine



MODEL: HCD2-1501-40

MODEL: HCD2-X1501-40

HAPPY Industrial Corporation

JAPAN

# HCD2 SERIES

## Computerized Embroidery Machine

Newly designed HCD2 series is built with the same principles and superior craftsmanship Happy is known for. Compact but strong body gives the possibilities to handle all type of materials and finished goods.

### Full-Industrial Embroidery Machine

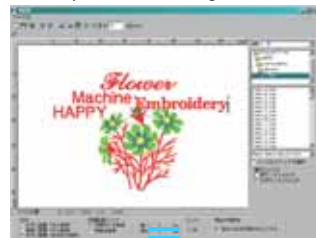
In terms of functionality, HCD2 makes no compromises when compared to its full-sized siblings in the HAPPY line. Engineered in a strong cast-iron frame. HCD2 may be compact in size, but is built to stand the rigors of commercial sewing. Sometimes big things do come in small packages!



### Happy Link & LAN Connection

USB connection with machine and PC with Link software enables you to transfer and control designs and change color and set sewing. LAN system enables network to control multiple machines with one PC. Monogramming and design editing functions expand the flexibilities and the possibilities.

Example of editing function



Made in Japan

### Front Light

A bright LED light illuminates the work area bright.



### Color LCD Touch Screen Control Panel

Newly designed color LCD touch screen control panel makes operation easier and faster. A stylus is equipped as standard, and USB mouse for PC can be used.



### HCD2-X1501-40

With wide embroidery area(1200mm width) HCD2-X1501-40 is lined up as subclass. The flexibility of machine also allows you to embroider on cap and finished goods.



### Standard Feature and Functions

- Color LCD Touch Screen Control Panel
- HAPPY Link/LAN Software
- Automatic Color Change
- Automatic Thread Brake Detection
- USB/LAN Port for PC Connection
- USB Port for Flash Drive/Mouse
- Frame Offset Function
- Frame Out Function
- Auto Origin Function
- Built-in Help Function
- Frame Trace Function
- Design Convert
- Design Rotate
- Repeat Sewing
- Automatic Short Stitch Removal
- Icon Free Positioning
- Multilingual Operation